

NOBLE

PARTNERS

A transformative leader of technology for global wellness

CORPORATE HISTORY

2016

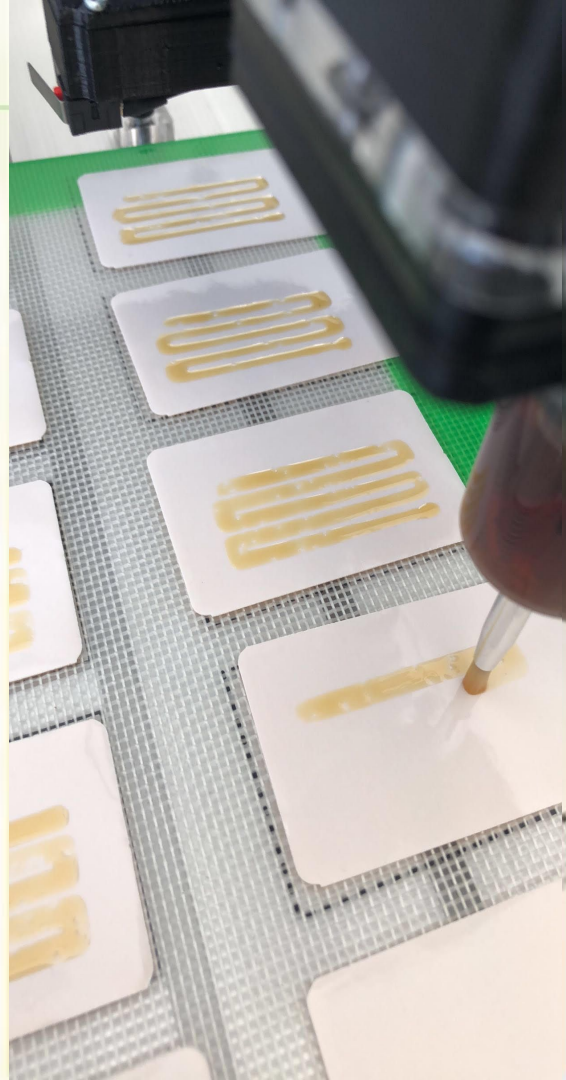
Noble began with a Manna Molecular Sciences license to manufacture Medical Cannabis transdermal technology.

2017

Started *mobile manufacturing platform* for dispensaries across New England to provide pharmaceutical quality manufacturing and product development for the medical and adult-use cannabis industries.

2018

Noble established its first **central HQ** with a focus on hemp-derived CBD. Located on a former US Navy Air Base, Noble provides national and international clients with hemp processing, distribution, private & white labeling, product development and large scale production.



CORPORATE HIGHLIGHTS

- Human & Veterinary Pharmacology
- Extraction & Refinement
- Mobile Manufacturing
- CBD/THC/Kratom White Label
- Vape Technology & Design
- Clinical Expertise
- Pharmaceutical Robotics
- Micropropagation Robotics
- CIA directive 6/9 Sensitive Compartmented Information Facility
- Global Distribution
- Pesticide Remediation
- Multi-billion Dollar Publicly Traded Clientele

NOBLE
PARTNERS

Global Enterprise Solutions



Distribution & Sales

- C-store, smoke shops, and vape stores
- Over 1500 dispensaries in network
- Global distribution
- Vending machines
- E-Commerce
- National sales team
- CBD store brand
- Big box retail: Walmart, Target, and Costco

Manufacturing

- White label solutions including custom mold design, OEM/ODM
- Mobile Platform
- Large inventory of products
- Co-Packing
- Custom printing and labeling
- Proprietary cartridge & hardware design

Logistics

- Designated foreign trade zone
- Located on airport
- Up to 150,000 sq ft of manufacturing & aviation space
- Global factory management
- Global cannabis supply chain
- Network of international suppliers, factories & distributors in China

NOBLE
PARTNERS

Capabilities



NOBLE
PARTNERS

Capabilities



Intellectual Property

- Brand & IP licensing
- Royalty & revenue share models
- Franchise development
- Exclusive and non-exclusive licenses



Licensing

HEMP

Maine Cultivation (pending)

MEDICAL/RECREATIONAL

Maine

LD238 Manufacturing (Medical Marijuana)
Caregiver (pending up to 4 retail locations)

California (pending)

(2) Type 6 / Manufacturing

Type 11 / Distribution

Type 12 / Transporter

Colorado (acquisition pending)

(4) Recreational

(2) Medical

NOBLE
PARTNERS

Capabilities



Engineering

- Expertise in product engineering, manufacturing engineering, quality management, and pharmaceutical robotics
- Proprietary viscosity meters
- ISO 9001, AS 9100 Aerospace, or TS-16949, and GMP compliance
- Lean Manufacturing, 5-S, and Kaizens
- Regulatory compliance in Industrial and Medical Device Sectors



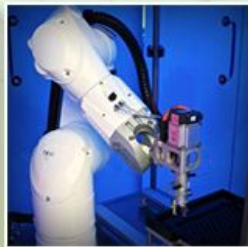
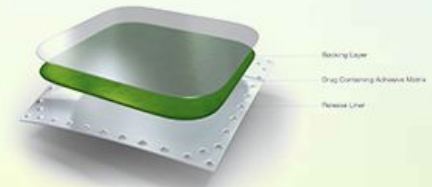
Biotechnology

- DEA & FDA drug compliance
- Clinical research and data collection
- Compounding Pharmacy
- Dosing protocols
- Human and veterinary pharmacology
- Chemical synthesis & analysis
- Instructional design and assessment
- Cannabis & kratom formulation improvement
- Proprietary Nano Vape (1/2019)
- Cell Culture



Transdermal

- Proprietary technology
- Monolithic patch design
- Up to 1,000,000 patches per day
- FDA compliant technology



NOBLE
PARTNERS

Proprietary Technology



NOBLE
PARTNERS

Proprietary Technology



Pharmaceutical Robotics

- FDA compliant
- Proprietary carts and feeding system
- Stationary platform: Up to 150,000 cartridges filled and capped per day
- Mobile platform: up to 10,000 cartridges filled and capped per day
- 2/2019 Launch



Micropropagation Robotics

(Online 3/2019)

- Up to 160,000 clones a month per 2000 sq ft
- Preserve strains and eliminate trait degradation



Extraction Systems

- 3,000 pounds of biomass a day per machine
- New machine completed every 10 days. (Q1 2019)
- Q&A engineer approved



Isolate / Distillate Refinery Model

- Building national network of refineries
- 3 weeks to setup refinery
- 1200 to 6000 kilo monthly output per refinery



NOBLE
PARTNERS

Board Members

Jenny Mathieu COO, Co-founder Noble Group

Jenny has an extensive background in pharmaceutical leadership & operations. Her experience with startups has lead to the creation of multiple million dollar entities. Her interests in corporate operations stems from a successful leadership career with a Fortune 50 company.

Sean Grady CEO, Co-founder Noble Group

Sean is a visionary and serial entrepreneur with a background in leadership, finance, and real estate. He leads Noble from the ground up, focusing on creating maximum impact for global wellness.

|

Dan Mickool R.Ph, MS, Ed D. President of Clinical Affairs and Strategic Initiatives

“Bowtie Dan” has extensive management and leadership skills in the clinical arena and has successfully owned and operated a pharmaceutical consulting business as well as being a health-systems director. He holds several academic medical appointments at the University of New England and Dartmouth Geisel School of Medicine. Dan’s interests are in product development and unique compounding formulations and is a keen lover of the arts during his spare time.

Becky DeKeuster M.Ed CEO, Noble Wellness

A brilliant Cannabis pioneer who has impacted markets from California to Maine. She co-founded multi-licensed THC operations and successfully advocated for policy reform. Becky has held senior leadership positions in Cannabis startups to multi-billion dollar firms.

NOBLE
PARTNERS

Research & Development

Cory Theberge PhD Chief Science Officer

Cory holds a PhD in chemistry and has had a lengthy career in the pharmaceutical industry, and in collaboration with academia developed extensive relationships in the veterinary pharmaceutical world. He is a formulation and application specialist with interests in pet health. When not being a scientist, Cory is a talented guitarist and vocalist.

Robert Wiley “Ole” CTO, Noble Refinery & Dist.

The Cannabis industry veteran innovator who founded a wildly successful refinery training school. He brought about the BlackBox Vape Pen and Strain Specific Concentrates. Ole brings deep experience in creating the industry’s most refined Cannabis-derived products. Having trained hundreds of lab & refinery operators across North America, his alumni network is unmatched.

Brooke Hebert Executive Chef

Brooke studied under Gordon Ramsey in London, England. She has developed edible product lines for two interstate Cannabis organizations totaling over \$10,000,000 in sales and 60+ products collecting royalties; within three years! Brooke has personally been healed by our transdermal patches!

Engineering & Supply Chain

Georges Makhlof

“George” has an impressive background in international business and start-up technology development. His formal training includes study at MIT, along with a degree in electrical engineering. He has a love for travel and fine dining which led to him being a restaurateur.

Gil Cole Senior Engineer

Gil has a colorful and quality background. He has built seven ISO factories from the ground up in the US. As a mechanical engineer, he has designed systems like the Ford Mustang transmission and overseen manufacturing of everything from machine guns to toasters. Recently, in a private transaction, he sold one of his multi-million companies.

NOBLE
PARTNERS